

Fabricators & Welders to the Offshore, Subsea, Nuclear, Power Generation and Renewable Energy Industries



**SPECIALIST WELDING
& ENGINEERING LTD**

ENGINEERING INNOVATION THROUGH DIVERSITY

Over 65 qualified weld procedures including: Aluminium, Inconel 625,
Super Duplex, RQT 701, Stainless Steels and S355J2 Carbon Steels

Welding and fabricating of the highest quality - on time and within budget.

We combine expert knowledge and a proven track record to supply your welding and fabrication requirements from low carbon steel to exotic alloys to a variety of market sectors.

A COMPANY WITH PASSION

We specialise in customer's individual requirements, utilising the best welding techniques available, combined with a passion for engineering and fabrication - that's our commitment.

OUR SERVICES

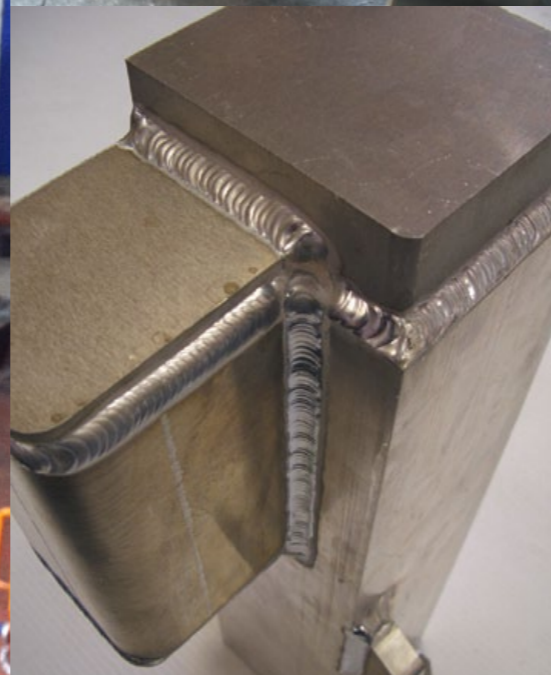
SWEL are situated in the North East of England with transport links to Aberdeen and the rest of the UK close to hand. Operating from our modern 7500 square foot facility we are fully ISO 9001 certified, fabricating and welding to standards is our business. A brief look at our weld procedure register shows

that be it an AWS D1.1 or EEMUA 158 code, SWEL can cater for your requirements.

Our services include:

- **FABRICATION IN STEEL AND ALLOY** - including super duplex & aluminium.
- **SITE SERVICES & MAINTENANCE** - including execution of welding, sheet metalwork and fabrication on location at customers premises.
- **FULLY EQUIPPED FABRICATION FACILITY**
- **EMERGENCY CALL OUT** - National/International service available.

"In an industry with high demands and constant pressure, we do what we say - that's why we're your first choice for all specialist welding"



WELD PROCEDURE REGISTER									ISSUE No : 3	OPS DOC 9		
WPS NO	REV	WELDING PROCESS	MATERIAL TYPE	POS	THICK COVER MIN - MAX	DIA COVER MIN-MAX	JOINT GEOMETRY	CODE	CONS	DATE	SIGNED	COMMENTS
1	0	GTAW	1.1, 1.2	PA	10-40	150 DIA MIN	BUTT	BS EN ISO15614-1:2004	A5.18-93 : ER70S-2	3.04.06		CARBON BUTTS
2	0	GTAW	8,9,2,9,3,10	PA, PB	2-12	ALL	BUTT	BS EN ISO15614-1:2004	A5-29 ER1 TT-G A5-9-93 ER 316L	5.07.06		316 BUTTS
3	0	GTAW	ALL NI ALLOYS AND W11 S1/S1	PA	1.5-6	500 AND ABOVE	FILLET	BS EN ISO15614-1:2004	A5.14 ERNiCr-3	14.03.07		ALLOY 800 HT FILLETS
4	0	GTAW	1	PA	NO RESTRICTION	25 AND ABOVE	FILLET	BS EN ISO15614-1:2004	AWS A5.18-93	21.03.07		ST52 SOCKET WELDS
5	0	GTAW	8,9,2,9,3,10	PA, PB	5-20	500 AND ABOVE	BUTT	BS EN ISO15614-1:2004	AWS A5.9-93 ER2209	22.10.07		22 Cr DUPLEX BUTTS
6	0	MAGS	25	PA	3-24	N/A	FILLET	BS EN 9606-2:2004	AWS A5.10-92 ER 4043	24.01.08		ALUMINIUM FILLETS
7	0	GTAW	23,23.1,23.2	PB	3-16	N/A	FILLET	BS EN 9606-2:2004	AWS A5.10-92 ER 4043	14.04.08		FILLET WELDS ON PIPE AND PLATE ALUMINIUM
8	0	MAGS	8 AUSTENITIC ST/ST	PA	5-12	500 AND ABOVE	FILLET	BS EN ISO15614-1:2004	AWS A5.9 ER316LSi	8.09.08		316 S1/ST PLATE WELDS
9	0	GTAW	10.2 OR 10.2 WELDED TO 10.2 OR 10.1	ALL	3-11	3" AND ABOVE	BUTT	BS EN ISO15614-1:2004	BSEN 25 9 4 NL	28.01.09		SUPER DUPLEX BUTTS AND FILLETS
10	0	MAGS	3A-3.1-1.2-1.2-2,3A-1,3A-2	ALL	12.5-50	500 AND ABOVE	BUTT	BS EN ISO15614-1:2004	GmN3Ni1CrMo	4.09.09		RQ1 701 ALL POSITIONS EXCEPT PG
11/12	0	MAGS	1.2, 1.1, 1.2, 1.4	PB, PD	ABOVE 5MM	600 AND ABOVE	FILLET	EEMUA 158	AWS : A5-20 E71T-1M	6.10.09		SINGLE RUN FILLETS S355J2G3
13	0	GTAW	10.1-34	ALL	N/A	N/A	FILLET	BS EN ISO15614-1:2004	AWS A5.14 ERNiCr-3	3.12.09		REPRESENTATIVE TEST PIECE DUPLEX TO CIPRO NICKEL 90/10
15	0	MAGS	8,9,2,9,3,10	PA, PB	ABOVE 5MM	500 AND ABOVE	BUTT	BS EN ISO15614-1:2004	AWS A5.9 ER316LSi	6.04.10		316 ST/ST PLATE BUTTS
17	0	GTAW	8.1-8.1	ALL	3-8	1" NB AND ABOVE	BUTT	BS EN ISO15614-1:2004	AWS-SFA 5.9 ER 308 L	19.08.11		304 ST/ST PIPE BUTTS
18	0	MAGS	8.1-8.1	ALL	3-20	500 AND ABOVE	BUTT	BS EN ISO15614-1:2004	AWS-SFA 5.9 ER 308 L	19.08.11		304 ST/ST PLATE BUTTS
20	0	GTAW	1-6	ALL	N/A	N/A	P PEN BUTT	AWS D1.1	AWS A5.9 ER309L	5.03.12		S355-17-4 PH P PEN BUTTS
21	0	MAGS	1-1	ALL	3-25	73 OD AND ABOVE	BUTT	AWS D1.1	BS 2901 PT 1:1983 A18	5.03.12		S355 BUTTS
22	0	GTAW	43-43,45-45,47-47	ALL	3-17	25 OD AND ABOVE	BUTT	BSEN 15614-1:2004+A2:2012	BS EN ISO 18274-41 SNI6625	15.08.12		INCONEL 625 BUTTS
23	0	GMAG	1-6	ALL	3-UNLIMITED	73 OD AND ABOVE	BUTT	AWS D1.1, ASME IX	AWS ER 70S-6	20.07.12		S355 J2 BUTTS
25	0	GTAW	1-43	ALL	3-17	25 OD AND ABOVE	BUTT	BSEN 15614-1:2004+A2:2012	BS EN ISO 18274-41 SNI6625	15.08.12		INCONEL 625 - CARBON

Helping you overcome the challenges of today and the anticipated challenges of tomorrow.

The SWEL in house team offer you a quality, competitive service with a proven track record in reliability. Combining specialist expertise in all aspects welding along with full documentation for all our sub sea projects... this is the cornerstone of our sub sea division.

SUB SEA PROJECTS

The demanding deadlines and quality for the sub sea industry dictate a dynamic approach. SWEL have the ability to offer machined fabrications, ROV tooling, skid frames and fabrications from all materials the sub sea engineer may select.

With the beauty of an in house welding engineer we can offer a vast array of weld procedures to suit the application or work with you to provide the solutions you demand. We believe that the ability to work in all materials ranging from S355 J2G3, RQT 701 to Super duplex and stainless steels to give us a competitive edge of which our customers demand.

The key to working with you is to offer a quality product to short lead times and probably most important the documentation relevant to the product.

Typically our quality department offer the following documentation reports to guarantee conformity and adherence to procedure.

- Certificate of conformity
- Weld procedures
- Weld procedure qualification report
- Welder qualification
- NDT reports
- NDT qualifications
- NDT procedures
- Material cert's
- Welding consumable cert's
- Paint reports
- Post weld heat treatment reports.

SWEL appreciate that the customers acceptance criteria is unique to them and can cater for any variations of documents required.

Typical components manufactured:

- Skid frames in steels, aluminium and stainless steel
- Diving cages/equipment
- Vessels, tanks and bump frames
- ROV tooling and components
- Winch equipment
- Hydraulic piping / equipment
- Fabrication in non ferrous materials to DNV / Lloyds approval.
- Pipe pigs

“Supplying our customers with a quality product combined with water-tight documentation is a winning combination”.



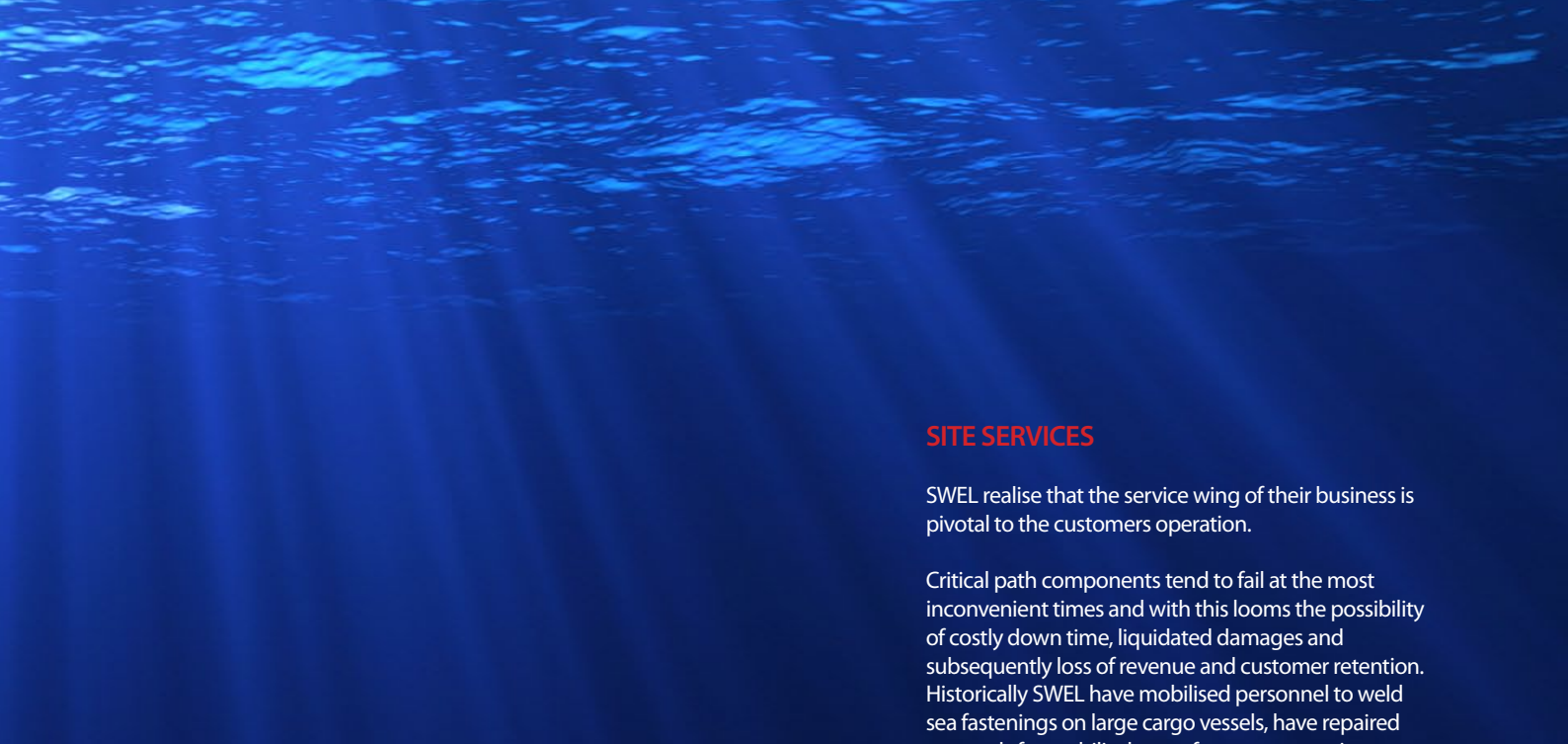
Lloyd's
Register



BUREAU
VERITAS



DNV



SITE SERVICES

SWEL realise that the service wing of their business is pivotal to the customers operation.

Critical path components tend to fail at the most inconvenient times and with this looms the possibility of costly down time, liquidated damages and subsequently loss of revenue and customer retention. Historically SWEL have mobilised personnel to weld sea fastenings on large cargo vessels, have repaired carousels for umbilical manufacture companies with extreme pressure and deadlines. Ultimately the satisfaction of all involved and the approval of third party surveyors is our objective.

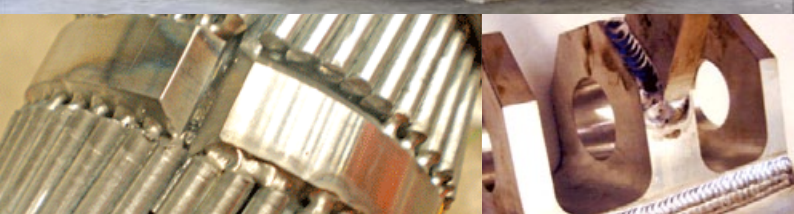
Whilst these disciplines are the more larger project orientated applications we are also most importantly akin with mobilising personnel for simple weld repairs, Non destructive testing, pipe work and basic shetmetal / fabrication applications. Our relationships with key customers is normally sealed with a fixed hourly rate and on most occasions can be dealt with on a same day basis.

With continued growth and healthy investment in modern technology and equipment, SWEL now offer an international service, a testimonial we believe to our commitment to the project.

EMERGENCY CALLOUT AVAILABLE ON REQUEST

Like to know more?

Contact us today to find out how the SWEL team can help you!



Specialist Welding & Engineering Ltd

Unit 3 The Preserving works
Newburn Industrial Estate
Newcastle upon Tyne
NE15 9RT

Tel: (0191) 2670032

Fax: (0191) 2670448

E-mail: sales@swel.biz

