



DRIVING HYDRAULIC SOLUTIONS

# Preventative Maintenance with Industrial & Marine Hydraulics Ltd.

---

Your Partner for Hydraulic System Longevity and Efficiency  
Chris Mosley Service Manager







DRIVING HYDRAULIC SOLUTIONS

# Common Obstacles

- Cost

# Common Obstacles

- Cost
- Robustness

## Common Obstacles

- Cost
- Robustness
- Working but at a reduced capacity



# Common Obstacles

- Cost
- Robustness
- Working but at a reduced capacity
- Operational availability

# Common Obstacles

- Cost
- Robustness
- Working but at a reduced capacity
- Operational availability
- Production is King

## Common Obstacles

- Cost
- Robustness
- Working but at a reduced capacity
- Operational availability
- Production is King
- ROI



# Tools to overcome the Obstacles

## The Fluid Care Portal

### Overview

The Fluid Care Portal is digital tool to support the reliability and maintenance of your fluid systems



**Analysis Reports**  
Track trends and gain insights with HYDAC's fluid analysis and reporting



**Interact**  
Replace traditional print-outs to interactive digital tools



**Asset Based**  
Build an easy-to-use asset structure and gain a complete overview of system conditions



**Documentation**  
Store related documents against the asset and equipment for easy access



# Fluid Care Portal

## Welcome Page

The Welcome Page gives you an overview of the health of your assets with the high level KPI's.

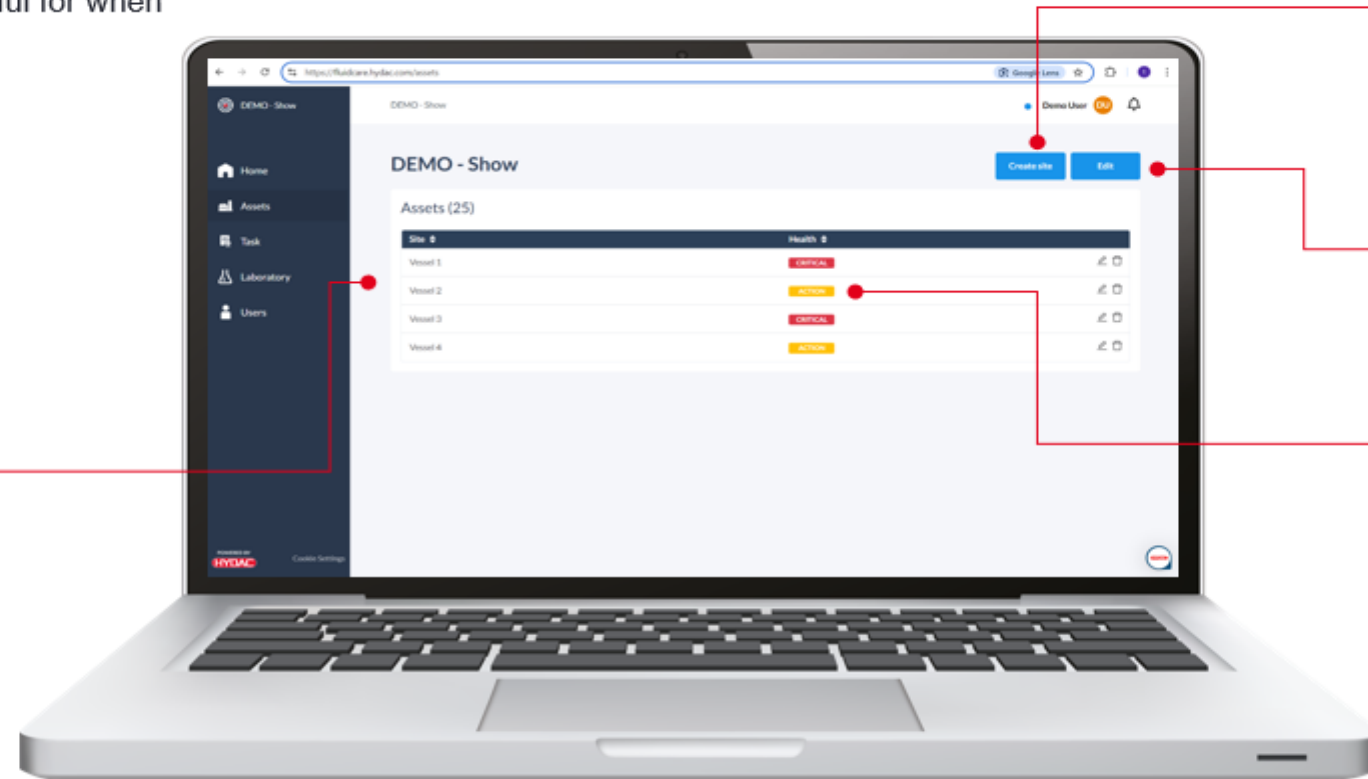


# The Fluid Care Portal

## Site Overview

Here you can build your company asset hierarchy, starting with sites or vessels. This is useful for when companies have multiple locations.

Site / Vessel Names



Create Site

Edit existing Site

Overview of site health

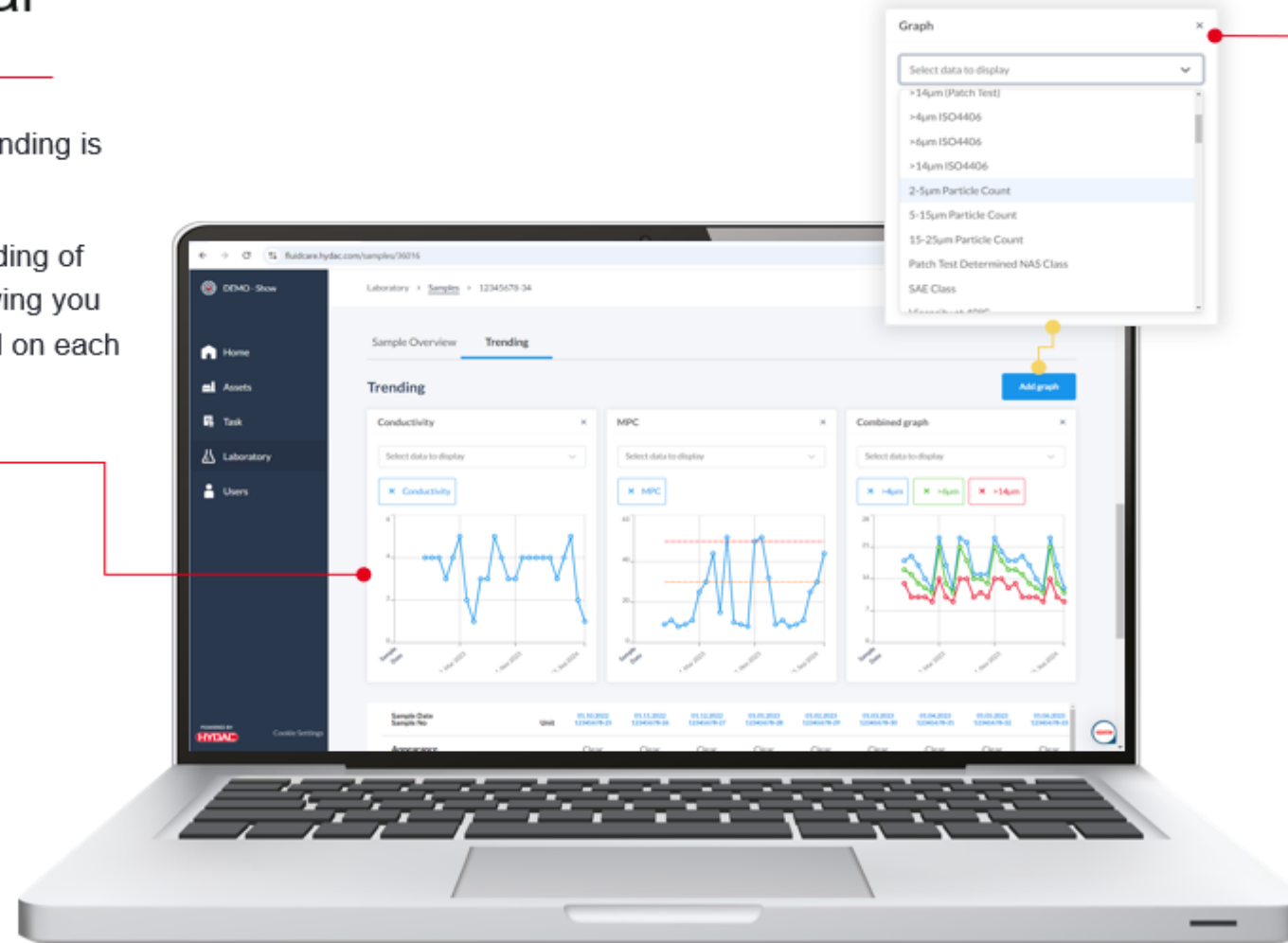
# The Fluid Care Portal

## Trending

Fluid Condition is often dynamic, and trending is important to ensure correct actions.

The Fluid Care Portal offers flexible trending of the important measurement points, allowing you to fully customise what you want to trend on each of your machines.

Trends



Customisable  
trending graphs



# Customer's Impact Study

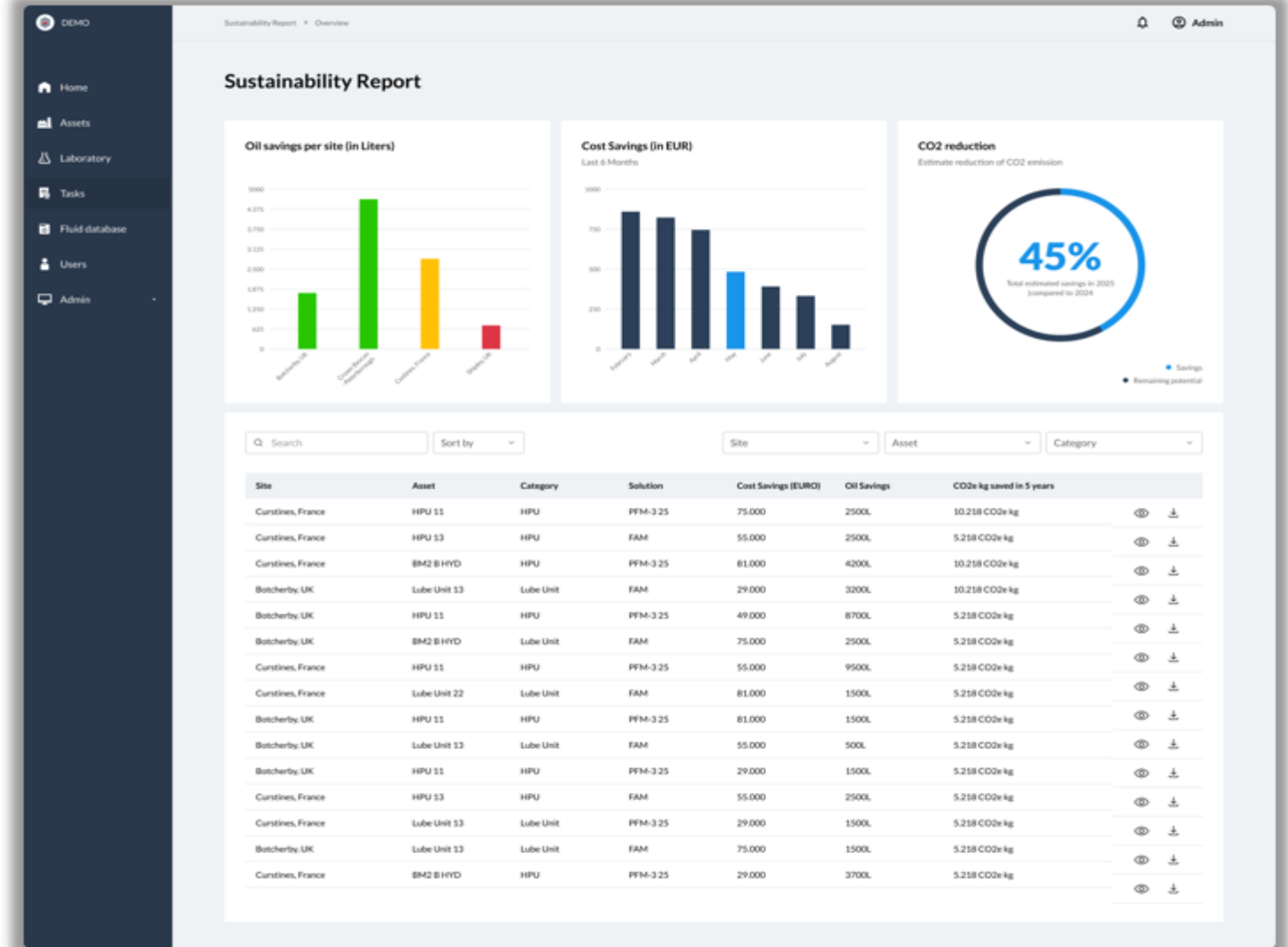
## Overview of savings and KPI's

### Automatic Case Study Generations

With data across assets, we can summarise the savings made, and positive impact technologies and solutions have made not only individually but as a collective.

These are then summarised and easily measured using the overview page. Data then should be exported for business reporting needs.

- Visual overview of oil savings, cost savings and CO2 reduction
- Table with all the Impact Studies made, possibility to go in depth with each one



# Case Study

## Marine Crane



Application  
400 ton Crane

Fluid  
Shell Tellus S2 VX 46

### Problem

Varnish build up meaning yearly fluid changes and tank cleaning. Reduction in cooling and increased filter usage

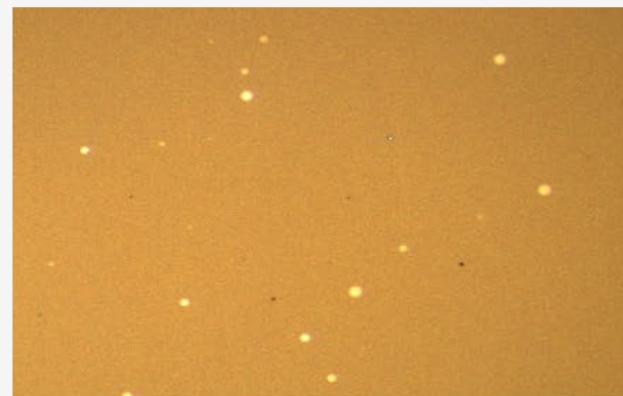
### Solutions

Initial tank cleaning, continued care using HYDAC VEU / Stat X Filter Elements

### Outcome

Three times expected fluid lifetime, reduced filtration usage and increased reliability of crane

Before



After



Hydraulic reservoir before and after.

MPC Vales from Fluid Care Portal



# Case Study

## Steel Manufacturing



Application  
Main Hydraulic System

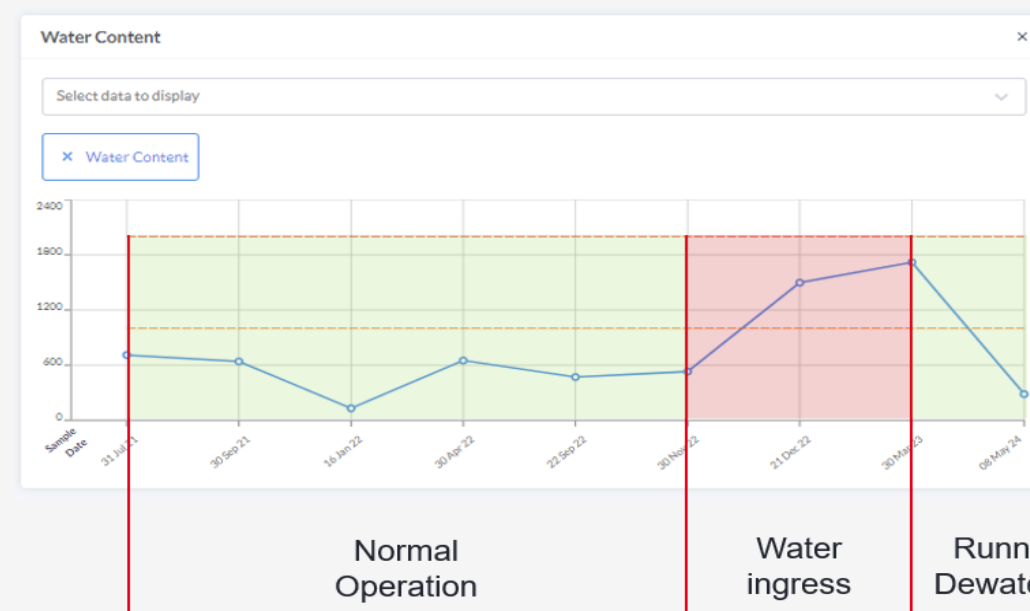
Fluid  
Total Hydransafe HFDU

Problem  
100,000L of fluid with high water content

Solutions  
Implement tailored purification system to remove water.

Implement online measurements for early warning of ingress in the future.

Outcome  
Extension of fluid lifetime





## The 3 I's

- Identify

## The 3 I's

- Identify
- Inform

## The 3 I's

- Identify
- Inform
- Ignore

## The 3 I's

- Identify
- Inform
- ~~• Ignore~~



## The 3 I's

- Identify
- Inform
- Implement



Any questions?





## Chris Mosley IMH Service Manager

Email: [chris.mosley@imh-uk.com](mailto:chris.mosley@imh-uk.com)

Tel: 01642 802715

Mob: 07552 900141

